

# Image Formation: Light and Shading

Introduction to Computer Vision  
CSE 152  
Lecture 3

CSE 152, Spring 2017

Introduction to Computer Vision

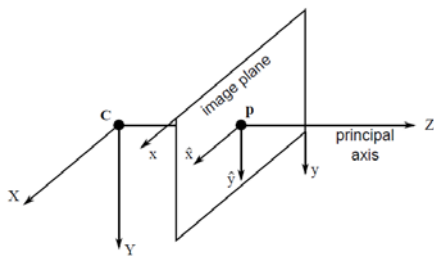
## Announcements

- Homework 1 is due Apr 12, 11:59 PM
- Homework 2 will be assigned on Apr 12
- Reading:
  - Chapter 2: Light and Shading

CSE 152, Spring 2017

Introduction to Computer Vision

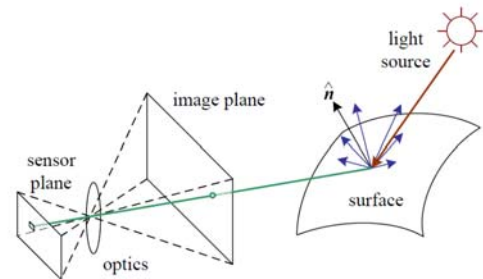
## Geometric image formation



CSE 152, Spring 2017

Introduction to Computer Vision

## Photometric image formation



CSE 152, Spring 2017

Introduction to Computer Vision

## Radiometry

- Solid Angle
- Irradiance
- Radiance
- Bidirectional Reflectance Distribution Function (BRDF)

CSE 152, Spring 2017

Introduction to Computer Vision

## Appearance: lighting, surface reflectance, and shading



CSE 152, Spring 2017

Introduction to Computer Vision

### Foreshortening

-The surface is foreshortened by the cosine of the angle between the normal and direction to the light.

CSE 152, Spring 2017 Introduction to Computer Vision

### A local coordinate system on a surface

- Consider a point **P** on the surface
- Light arrives at **P** from a hemisphere of directions defined by the surface normal **N**
- We can define a local coordinate system whose origin is **P** and with one axis aligned with **N**
- Convenient to represent in spherical angles.

CSE 152, Spring 2017 Introduction to Computer Vision

### Measuring Angle

- The **solid angle** subtended by an object from a point **P** is the area of the projection of the object onto the unit sphere centered at **P**.
- Definition is analogous to projected angle in 2D
- Measured in *steradians*, sr
- If I'm at **P**, and I look out, solid angle tells me how much of my view is filled with an object

CSE 152, Spring 2017 Introduction to Computer Vision

### Solid Angle

- By analogy with angle (in radians), the solid angle subtended by a region at a point is the area projected on a unit sphere centered at that point
- The solid angle subtended by a patch area **dA** is given by

$$d\omega = \frac{dA \cos \theta}{r^2}$$

CSE 152, Spring 2017 Introduction to Computer Vision

### Radiance

- Power is energy per unit time (watts)
- Radiance:** Power traveling at some point in a specified direction, per unit area perpendicular to the direction of travel, per unit solid angle
- Symbol:  $L(x, \theta, \phi)$
- Units: watts per square meter per steradian :  $W/m^2/sr = W m^{-2} sr^{-1}$

$$L = \frac{P}{(dA \cos \alpha) d\omega}$$

Power emitted from patch, but radiance in direction different from surface normal

Introduction to Computer Vision

### Irradiance

- How much light is arriving at a surface?
- Units of irradiance:  $W/m^2 = W m^{-2}$
- This is a function of incoming angle.
- A surface experiencing radiance  $L(x, \theta, \phi)$  coming in from solid angle  $d\omega$  experiences **irradiance**:

Crucial property:  
Total **irradiance** arriving at the surface is given by adding irradiance over all incoming angles

Total irradiance is

$$E(x) = \int_{hemisphere} L(x, \theta, \phi) \cos \theta d\omega$$

$$= \int_0^{2\pi} \int_0^{\pi/2} L(x, \theta, \phi) \cos \theta \sin \theta d\theta d\phi$$

Introduction to Computer Vision

## Camera's sensor

- Measured pixel intensity is a function of irradiance integrated over
  - pixel's area
  - over a range of wavelengths
  - for some period of time

$$I = \int_t \int_\lambda \int_x \int_y E(x, y, \lambda, t) s(x, y) q(\lambda) dy dx d\lambda dt$$

CSE 152, Spring 2017

Introduction to Computer Vision

## Light at surfaces

Many effects when light strikes a surface -- could be:

- transmitted
  - Skin, glass
- reflected
  - mirror
- scattered
  - milk
- travel along the surface and leave at some other point
- absorbed
  - sweaty skin

**Assume that**

- surfaces don't fluoresce
  - e.g., scorpions, detergents
- surfaces don't emit light (i.e., are cool)
- all the light leaving a point is due to that arriving at that point

CSE 152, Spring 2017

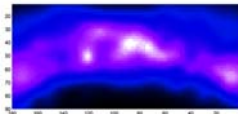
Introduction to Computer Vision

## Surface Reflectance Models

### Common Models

- Lambertian
- Phong
- Physics-based
  - Specular [Blinn 1977], [Cook-Torrance 1982], [Ward 1992]
  - Diffuse [Hanrahan, Kreuger 1993]
  - Generalized Lambertian [Oren, Nayar 1995]
  - Thoroughly Pitted Surfaces [Koenderink et al 1999]
- Phenomenological
  - [Koenderink, Van Doorn 1996]

### Arbitrary Reflectance



- Non-parametric model
- Anisotropic
- Non-uniform over surface
- BRDF Measurement [Dana et al. 1999], [Marschner]

### Specialized

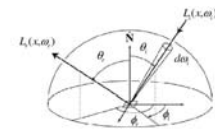
- Hair, skin, threads, paper [Jensen et al]

CSE 152, Spring 2017

Introduction to Computer Vision

## Lambertian (Diffuse) Surface

- BRDF is a constant called the albedo.  $\rho(\omega_i, \omega_o) = K$
- Emitted radiance is NOT a function of outgoing direction - i.e., constant in all directions.
- For lighting coming in single direction  $\omega_i$ , emitted radiance is proportional to cosine of the angle between normal and light direction



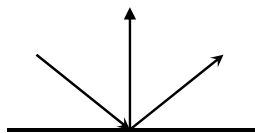
$$L_r(x, \omega_o) = \int_{\omega_i} f_r(x, \omega_i \rightarrow \omega_o) M_s(x, \omega_i) \cos \theta_i d\omega_i$$

$$L_r = KN \cdot \omega_i$$

CSE 152, Spring 2017

Introduction to Computer Vision

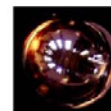
## Specular Reflection: Smooth Surface



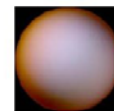
CSE 152, Spring 2017

Introduction to Computer Vision

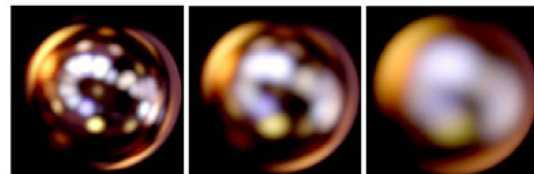
## Phong Model



Mirror



Diffuse



CS348B Lecture 10

S

Pat Hanrahan, Spring 2002

## Non-Lambertian reflectance

CSE 152, Spring 2017 Introduction to Computer Vision

## General BRDF: e.g. Velvet

*Portrait of Sir Thomas Morre, Hans Holbein the Younger, 1527*

[ After Koenderink et al, 1998 ]  
Introduction to Computer Vision

CSE 152, Spring 2017

## BRDF

With assumptions in previous slide

- **Bi-directional Reflectance Distribution Function**  
 $\rho(\theta_{in}, \phi_{in}; \theta_{out}, \phi_{out})$
- **Ratio of emitted radiance to incident irradiance (units: sr<sup>-1</sup>)**
- **Function of**
  - Incoming light direction:  
 $\theta_{in}, \phi_{in}$
  - Outgoing light direction:  
 $\theta_{out}, \phi_{out}$

$$\rho(\underline{x}; \theta_{in}, \phi_{in}; \theta_{out}, \phi_{out}) = \frac{L_o(\underline{x}; \theta_{out}, \phi_{out})}{L_i(\underline{x}; \theta_{in}, \phi_{in}) \cos \theta_{in} d\omega}$$

Where  $\rho$  is sometimes denoted  $f_r$ .

CSE 152, Spring 2017 Introduction to Computer Vision

## Ways to measure BRDF's

CSE 152, Spring 2017 Introduction to Computer Vision

## Gonioreflectometers

- Three degrees of freedom spread among **light source**, **detector**, and/or **sample**

Introduction to Computer Vision

## Gonioreflectometers

- Three degrees of freedom spread among light source, **detector**, and/or **sample**

Introduction to Computer Vision

## Isotropic BRDF

$$f(\theta_o, \varphi_o, \theta_i, \varphi_i) = f(\theta_o, \theta_i, \varphi_i - \varphi_o)$$

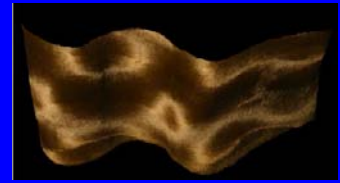


From Hertzmann & Seitz, CVPR'03

Isotropic BRDF's are symmetric about the surface normal. If the surface is rotated about the normal for the same incident and emitting directions, the value of the BRDF is the same.

Introduction to Computer Vision

## Anisotropic BRDF

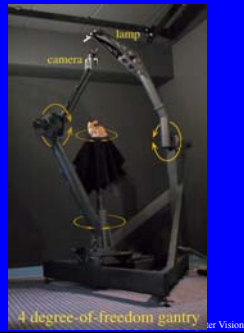


From Hertzmann & Seitz, CVPR'03

Introduction to Computer Vision

## Gonioreflectometers

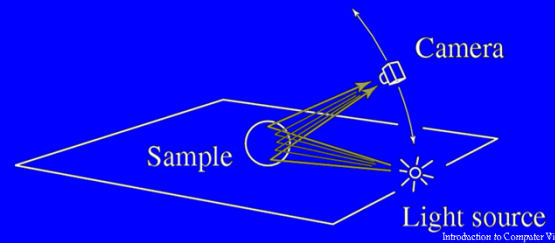
- Can add fourth degree of freedom to measure anisotropic BRDFs



4 degree-of-freedom gantry

## Marschner's Image-Based BRDF Measurement

- For uniform BRDF, capture 2-D slice corresponding to variations in normals

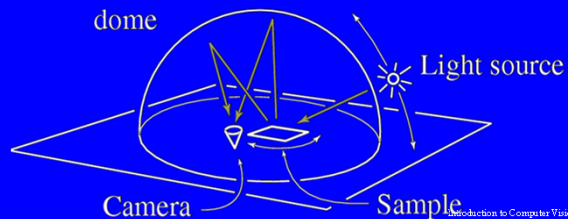


Introduction to Computer Vision

## Ward's BRDF Measurement Setup

- Collect reflected light with hemispherical (should be ellipsoidal) mirror [SIGGRAPH 92]

Half-silvered dome



Introduction to Computer Vision

## Ward's BRDF Measurement Setup

- Result: each image captures light at all exitant angles



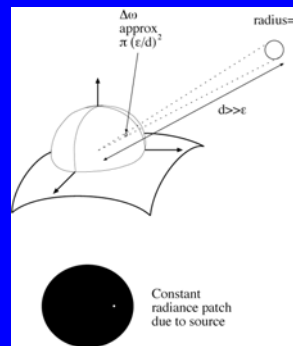
Introduction to Computer Vision

## Light sources and shading

- How bright (or what color) are objects?
- One more definition: Exitance of a source is
  - the internally generated power radiated per unit area on the radiating surface
- Also referred to as radiant emittance
- Similar to irradiance
  - Same units,  $W/m^2 = W m^{-2}$

Introduction to Computer Vision

## Radiosity due to a point source



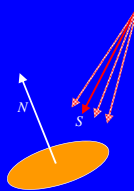
- small, distant sphere radius  $\epsilon$  and exitance  $E$ , which is far away subtends solid angle of about

$$\pi \left( \frac{\epsilon}{d} \right)^2$$

Introduction to Computer Vision

## Standard nearby point source model

$$\rho_d(x) \left( \frac{N(x)^T S(x)}{r(x)^2} \right)$$



- $N$  is the surface normal
- $\rho$  is diffuse (Lambertian) albedo
- $S$  is source vector - a vector from  $x$  to the source, whose length is the intensity term
  - works because a dot-product is basically a cosine

Introduction to Computer Vision

## Standard distant point source model

- Issue: nearby point source gets bigger if one gets closer
  - the sun doesn't for any reasonable meaning of closer
- Assume that all points in the model are close to each other with respect to the distance to the source. Then the source vector doesn't vary much, and the distance doesn't vary much either, and we can roll the constants together to get:



$$\rho_d(x) (N(x)^T S(x))$$

Introduction to Computer Vision

## Lighting at infinity

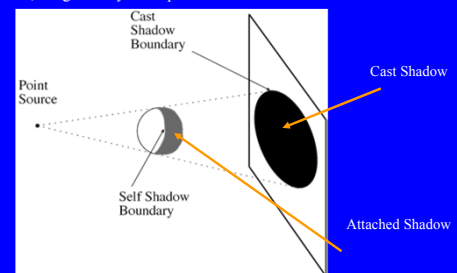
- Direction is a three vector  $s$ , with  $|s| = 1$ .
- Described as function on a sphere: radiance as a function of direction  $r(s)$
- Single point source is a delta function at some direction
- Multiple point sources: sum of delta functions



Introduction to Computer Vision

## Shadows cast by a point source

- A scene point that can't see the source is in shadow
- For point sources, the geometry is simple



Introduction to Computer Vision

## Shading models

### Local shading model

- Surface has incident radiance due only to sources visible at each point
- Advantages:
  - often easy to manipulate, expressions easy
  - supports quite simple theories of how shape information can be extracted from shading
- Used in vision & real time graphics

### Global shading model

- surface radiosity is due to radiance reflected from other surfaces as well as from surfaces
- Advantages:
  - usually very accurate
- Disadvantage:
  - extremely difficult to infer anything from shading values
- Rarely used in vision, often in photorealistic graphics

Introduction to Computer Vision

## Image sensors

Two types :

1. CCD
2. CMOS

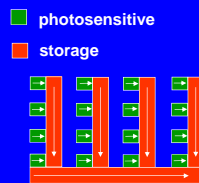
Introduction to Computer Vision

## CCD

Separate photo sensor at regular positions  
no scanning

Charge-coupled devices (CCDs)

*Interline transfer and frame transfer*



Introduction to Computer Vision

## CMOS

Each photo sensor has its own amplifier

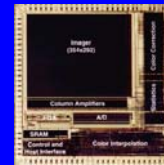
More noise (reduced by subtracting 'black' image)

Lower sensitivity (lower fill rate)

Uses standard CMOS technology

Allows other components to be put on chip

'Smart' pixels



Introduction to Computer Vision

## CCD vs. CMOS

- |  |  |
|--|--|
| <ul style="list-style-type: none"> <li>• Mature technology</li> <li>• Specific technology</li> <li>• High production cost</li> <li>• High power consumption</li> <li>• Higher fill rate</li> <li>• Blooming</li> <li>• Sequential readout</li> </ul> | <ul style="list-style-type: none"> <li>• Recent technology</li> <li>• Standard IC technology</li> <li>• Cheap</li> <li>• Low power</li> <li>• Less sensitive</li> <li>• Per pixel amplification</li> <li>• Random pixel access</li> <li>• Smart pixels</li> <li>• On chip integration with other components</li> </ul> |
|--|--|

Introduction to Computer Vision

## Color Cameras



We consider 3 concepts:

1. Prism (with 3 sensors)
2. Filter mosaic
3. Filter wheel

... and X3

Introduction to Computer Vision

## Prism color camera

Separate light in 3 beams using dichroic prism  
 Requires 3 sensors & precise alignment  
 Good color separation

Introduction to Computer Vision

## Filter mosaic

Coat filter directly on sensor

**Bayer filter**

Demosaicing (obtain full color & full resolution image)

Introduction to Computer Vision

## Filter wheel

Rotate multiple filters in front of lens  
 Allows more than 3 color bands

Only suitable for static scenes

Introduction to Computer Vision

## Prism vs. mosaic vs. wheel

approach	Prism	Mosaic	Wheel
# sensors	3	1	1
Separation	High	Average	Good
Cost	High	Low	Average
Framerate	High	High	Low
Artifacts	Low	Aliasing	Motion
Bands	3	3	3 or more
	High-end cameras	Low-end cameras	Scientific applications

Introduction to Computer Vision

## “newer” color CMOS sensor Foveon’s X3 – Sigma, Fujifilm

better image quality

smarter pixels

Pixel Size: 2x2    Pixel Size: 4x4    Pixel Size: 8x2  
©2005 Foveon, a Foveon X3 image sensor to be addressed in our future presentations

Introduction to Computer Vision

## Digital Camera

Introduction to Computer Vision



## Next Lecture

- Photometric Stereo
- Reading:
  - Section 2.2.4: Photometric Stereo
    - Shape from Multiple Shaded Images