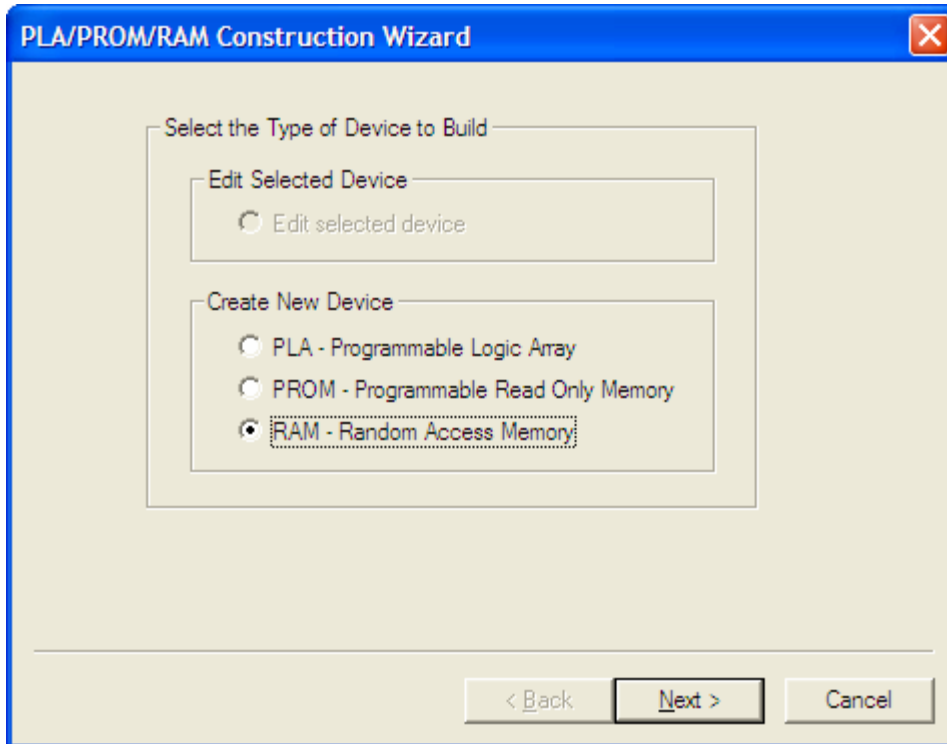
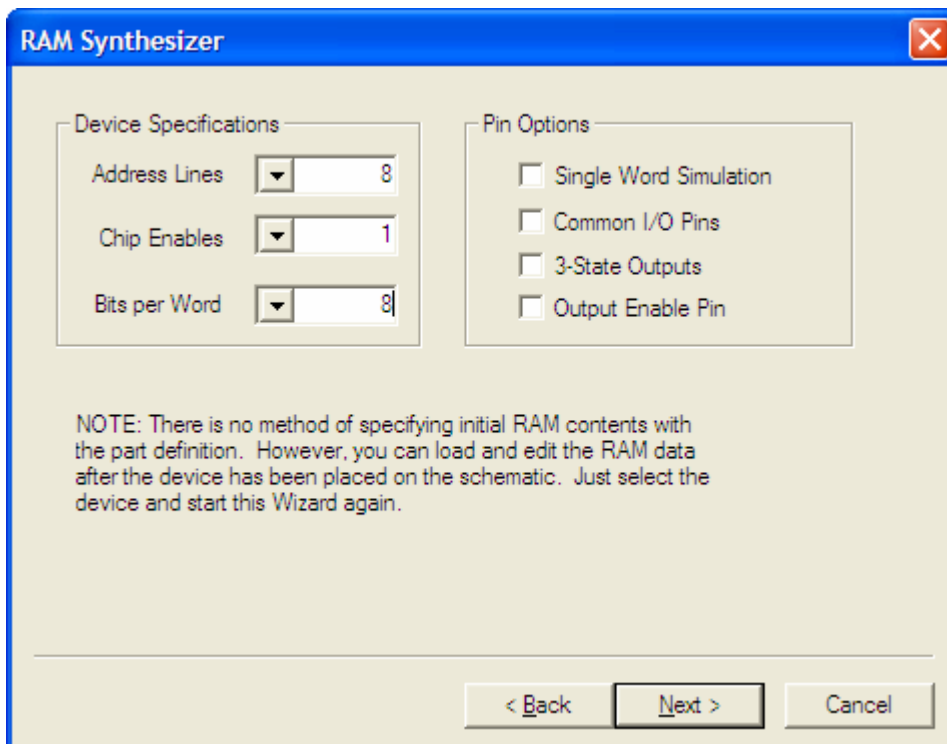


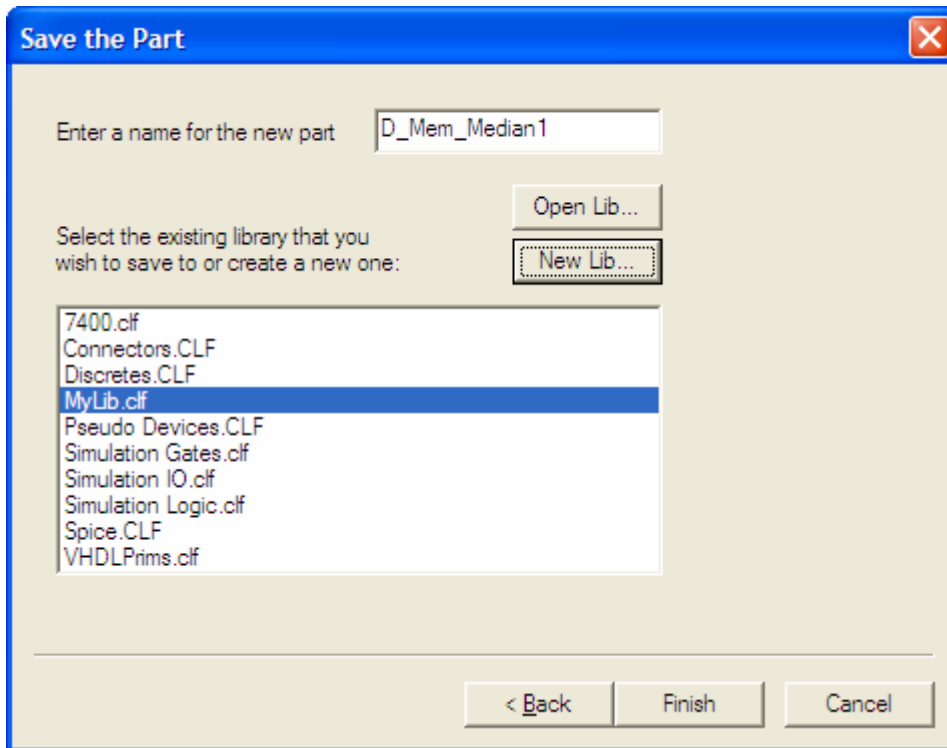
Logic Works 5. RAM and ROM tutorial.
This tutorial was created by Anjum Gupta (a3gupta@cs.ucsd.edu)
May 28, 2005.



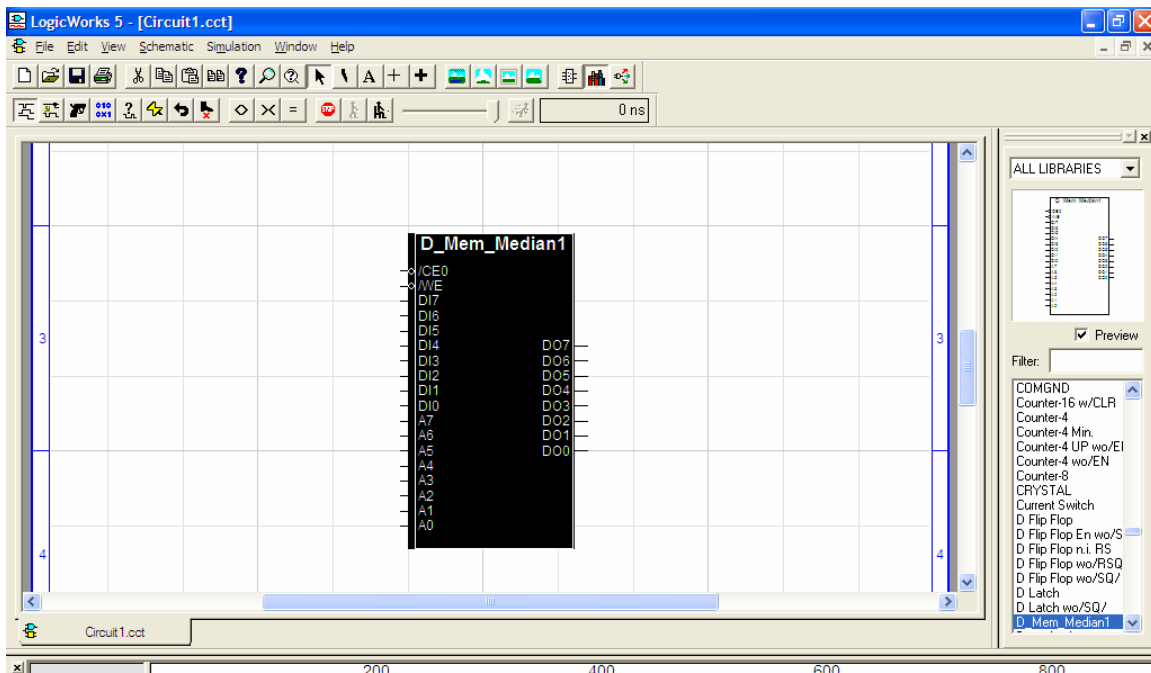
Choose “PLA/PROM/ RAM wizard” from simulation menu. For RAM (D-MEM) choose RAM option (as shown above) for ROM (I-MEM) choose PROM from the above choices. Click “Next”



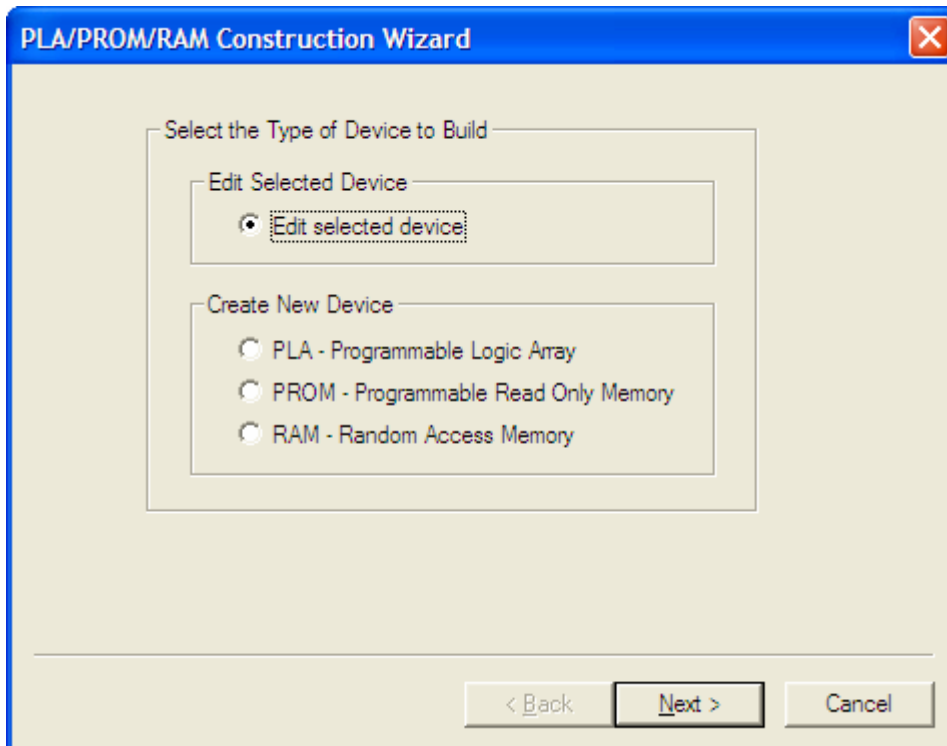
For ROM and RAM choose the above shown values and click “Next”



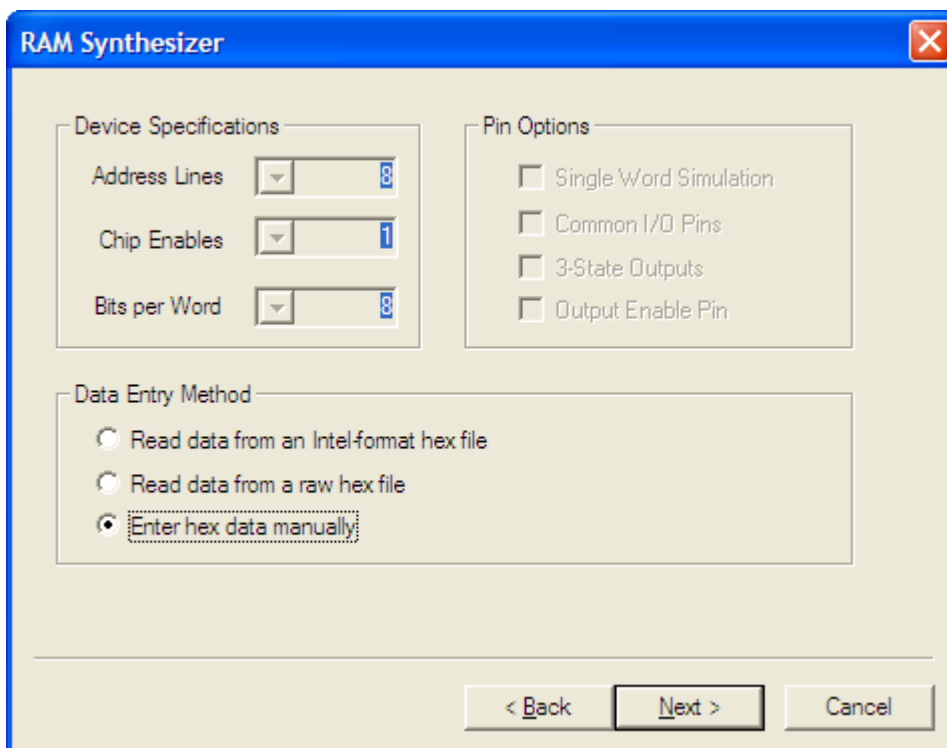
Choose a library or put the memory components in a new library. Name the chip whatever name you want. Click Finish.



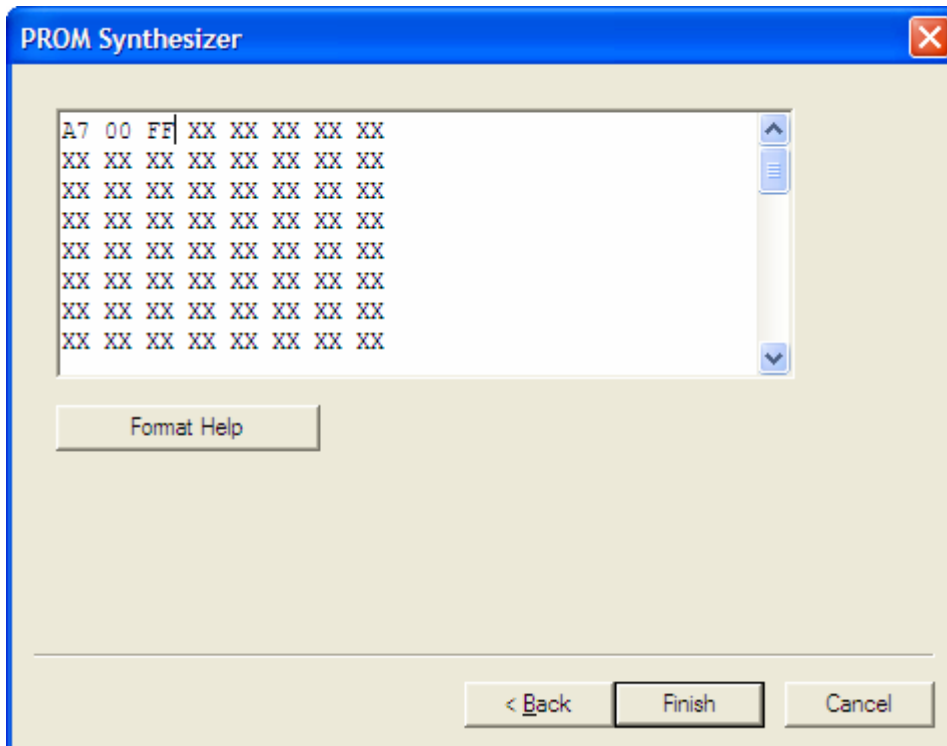
The chip name should appear in the parts list. Put the part in your circuit. To Enter data values in the chip. Click on the chip so it turns black (as shown above) then choose “PLA/PROM wizard” from simulation menu again.



Choose "Edit Selected device" this time, as shown above. Click Next/



You can choose any way to enter the data now. You can manually enter it in a text box by choosing the third option or have it read a text file. If you choose the third option, as shown above, and click next. You will come to the following screen.



Here you can enter the Hex values. It will also show the values that are already in the memory. This is how you can check the contents of the memory after or during the execution of your program.

Hope this helps.